

Appendices 14/1123/ADV

Sainsbury's Supermarkets Ltd, Whitehouse Farm , Bishopton Road West, Stockton-On-Tees

Erection of advertisements associated with proposed 3-pump petrol filling station to include 1 no. internally illuminated totem sign, 5 no. internally illuminated fascia signs and 7 no. non-illuminated other signs

The following are taken from the same plan 4062/200 rev C (27.05.2014)

1. Location plan
2. Proposed site plan and elevation of totem sign
3. Elevations of fascia signs
4. Other signs (non-illuminated)

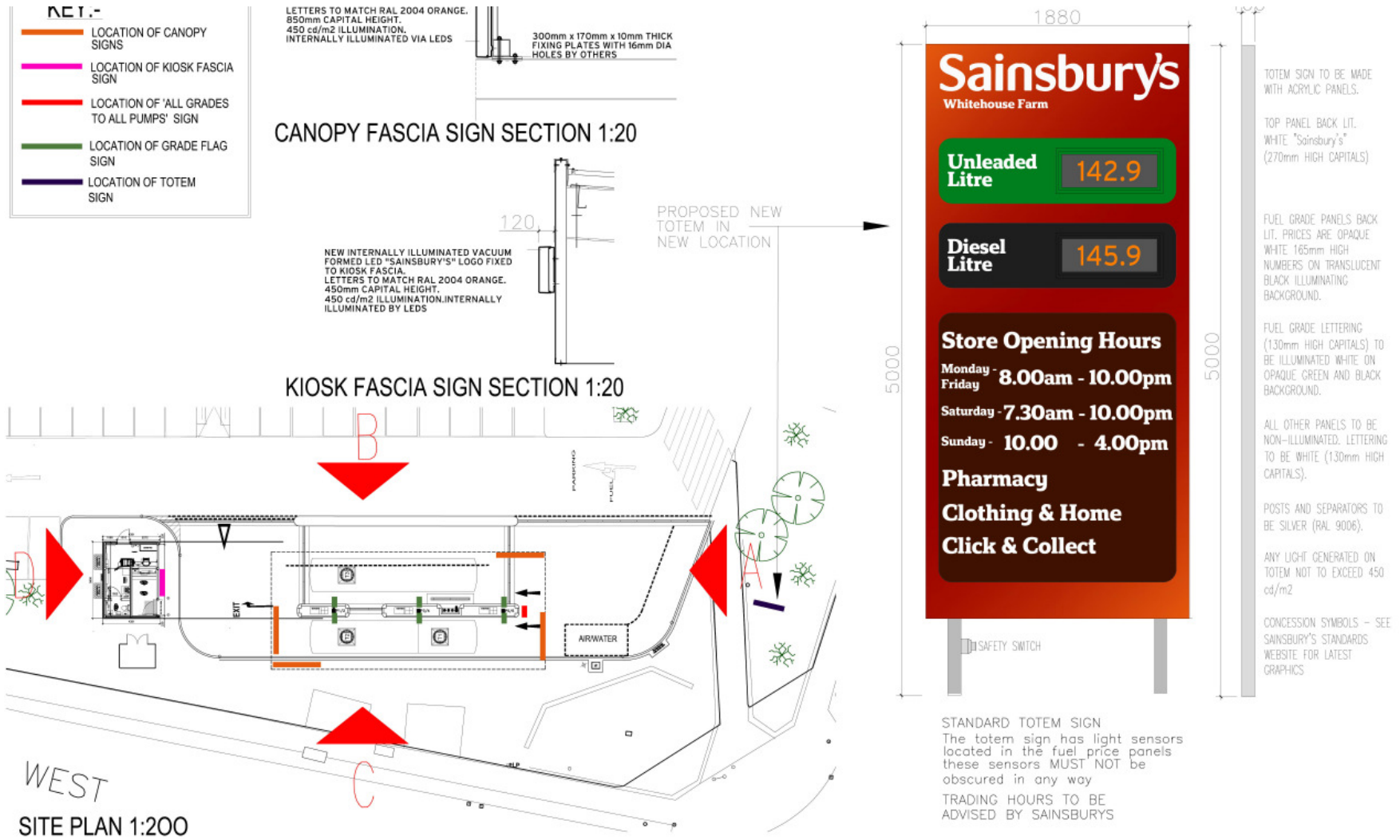
1. Location plan



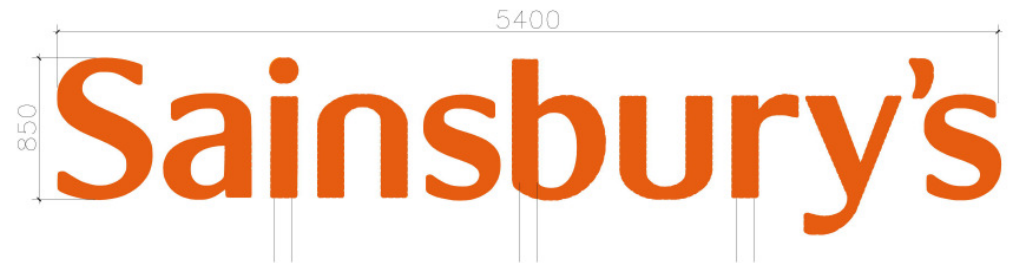
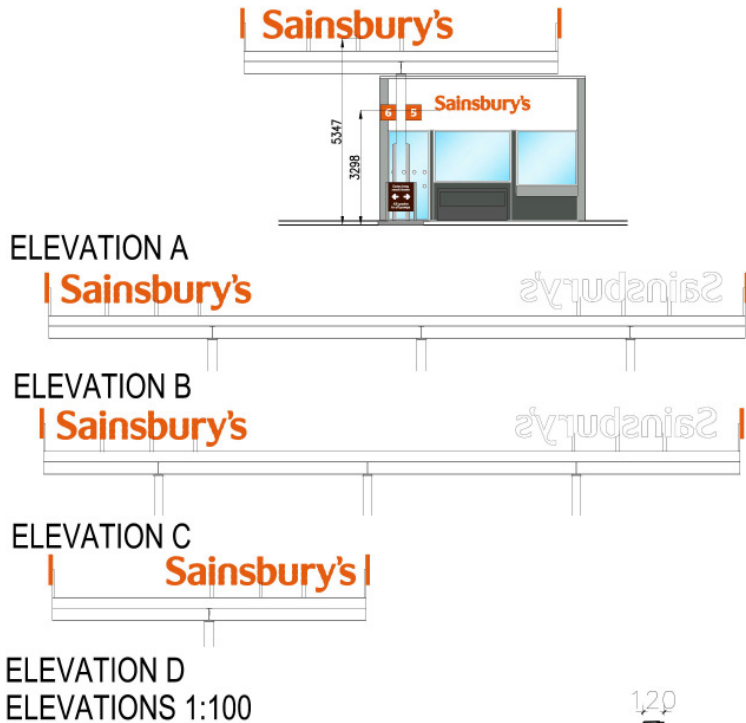
LOCATION PLAN 1:1000

T
0
<
VG

2. Proposed site plan and totem sign



3. Elevations of fascia signs



CANOPY FASCIA SIGN 1:20



NEW VACUUM FORMED LED "SAINSBURY'S"
LOGO LETTERS TO MATCH RAL 2004 ORANGE.
450mm CAPITAL HEIGHT
KIOSK FASCIA SIGN 1:20

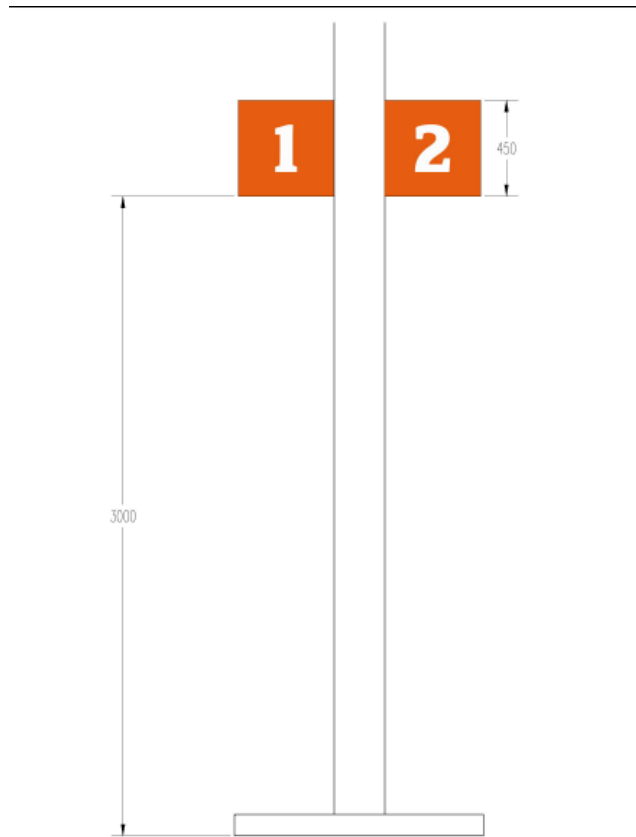


APPROXIMATE NORTH

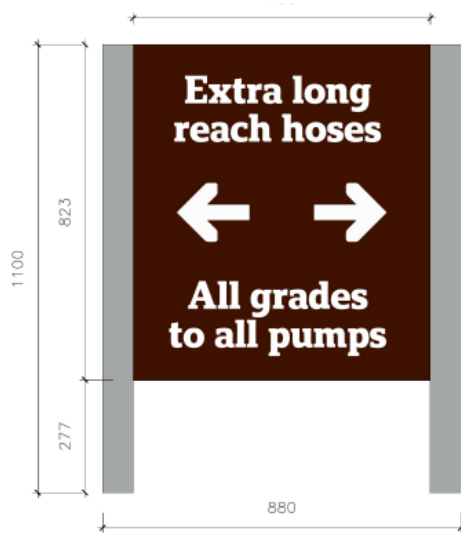


NOTE:- ALL STEELWORK TO BE

4. Other signs (non-illuminated)



GRADE FLAGS 1:20



ALL GRADES TO ALL PUMPS SIGN 1:10